

Appendix 1: Maps for management plan

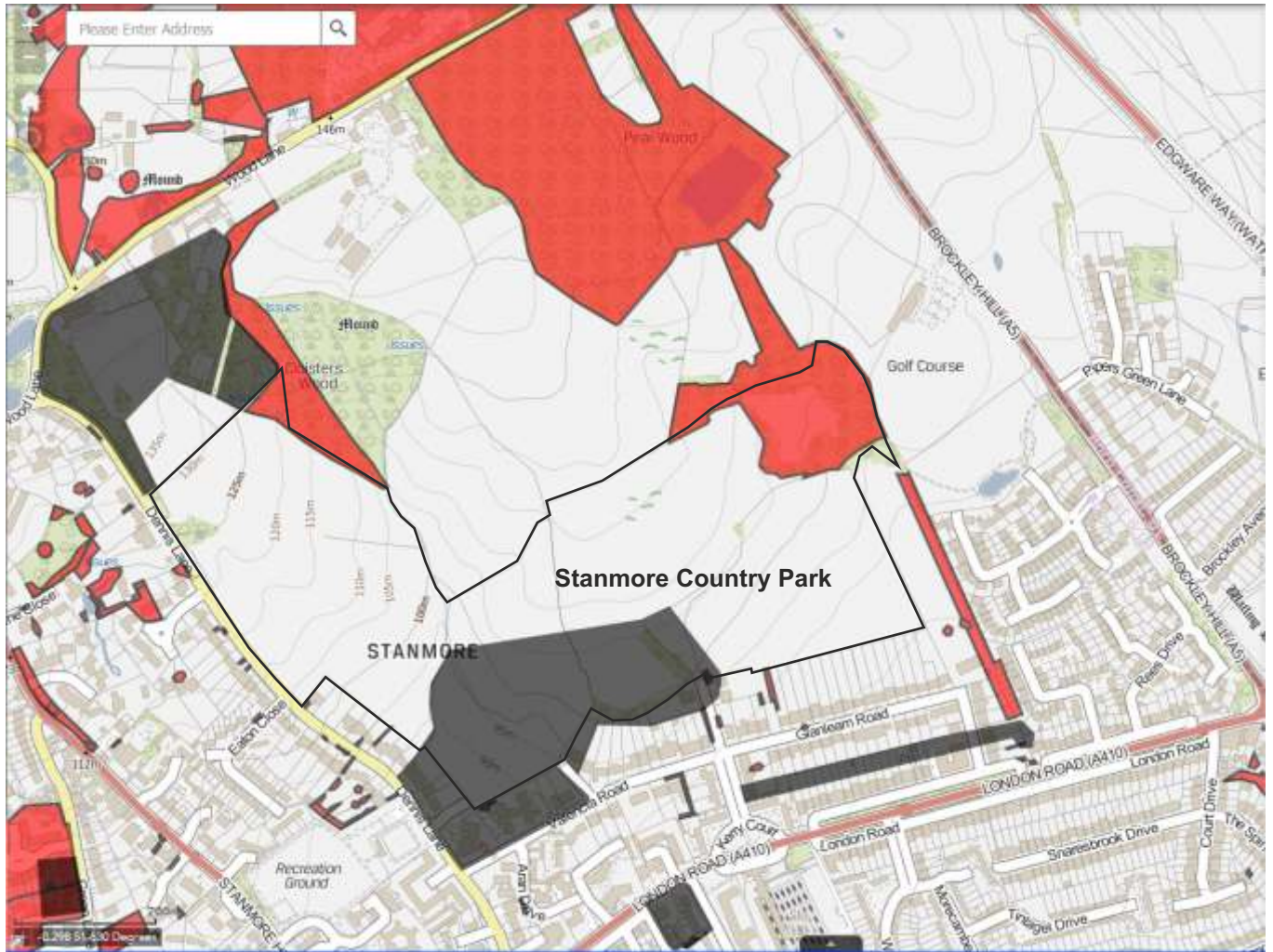
Map 1 Stanmore Country Park: Location and compartments



500 metres

Main image from Google Earth. KML overlay by Steve Bolsover.

Map 2 Stanmore Country Park: Tree preservation orders



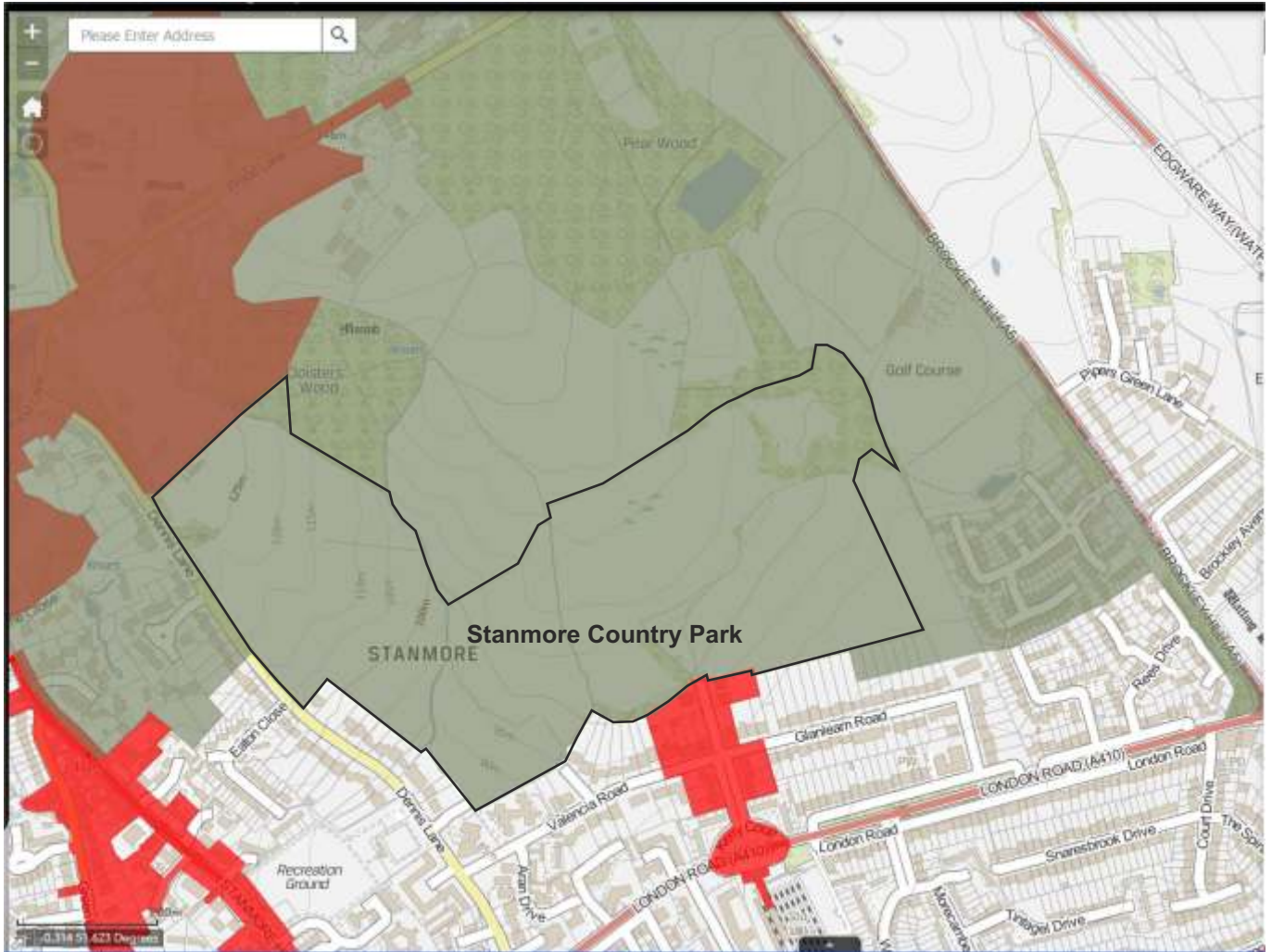
500 metres

Grey: Tree preservation area orders.

Red: Tree preservation orders groups and woodlands.

Screen shot of Harrow Council online planning map.

Map 3 Stanmore Country Park: Green belt and conservation areas



500 metres

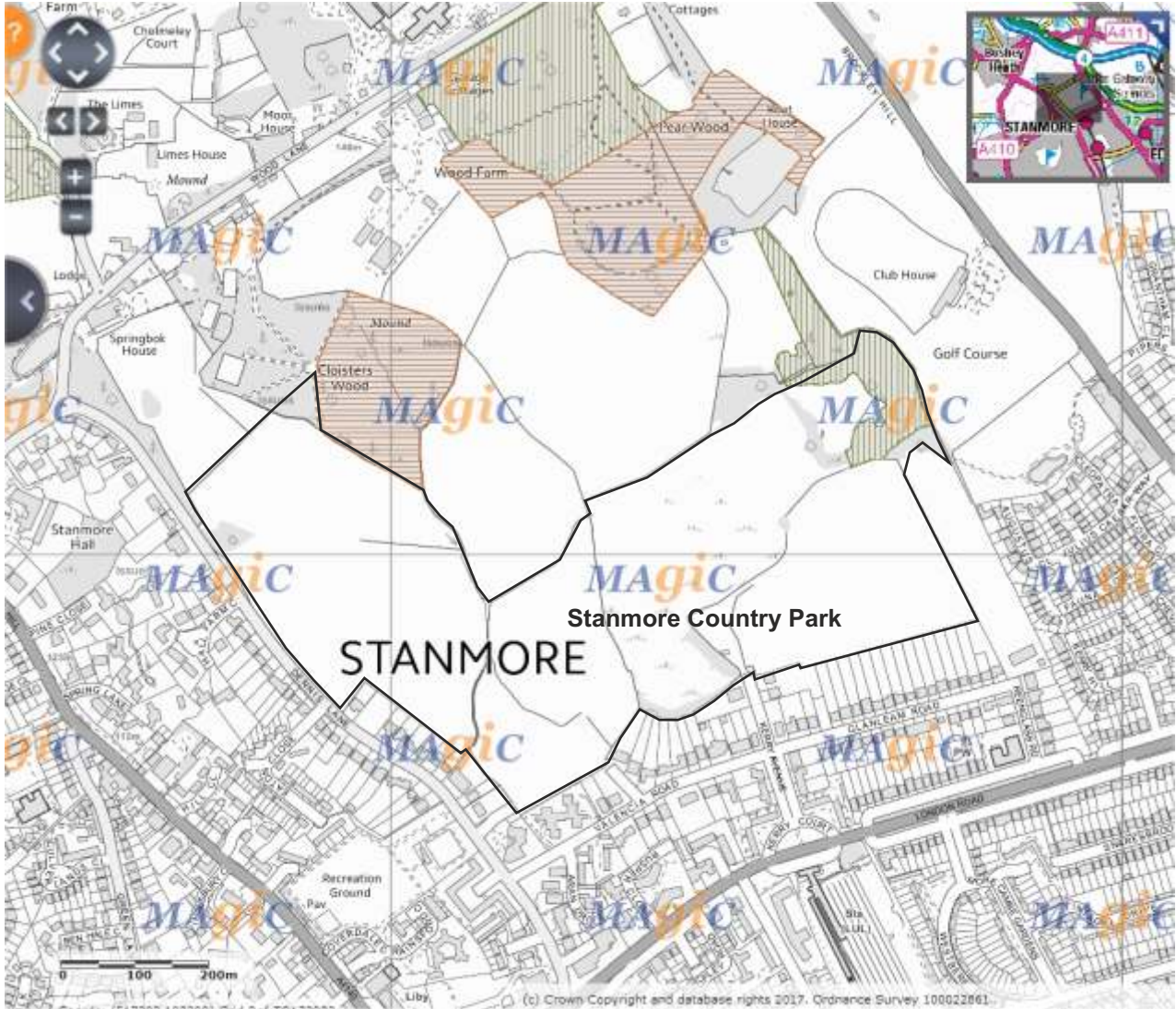
Green shows green belt areas within borough of Harrow.

Red shows conservation areas.

Overlap of green and red in the northwest appears brown.

Screen shot of Harrow Council online planning map.

Map 4 Stanmore Country Park: Ancient woodland

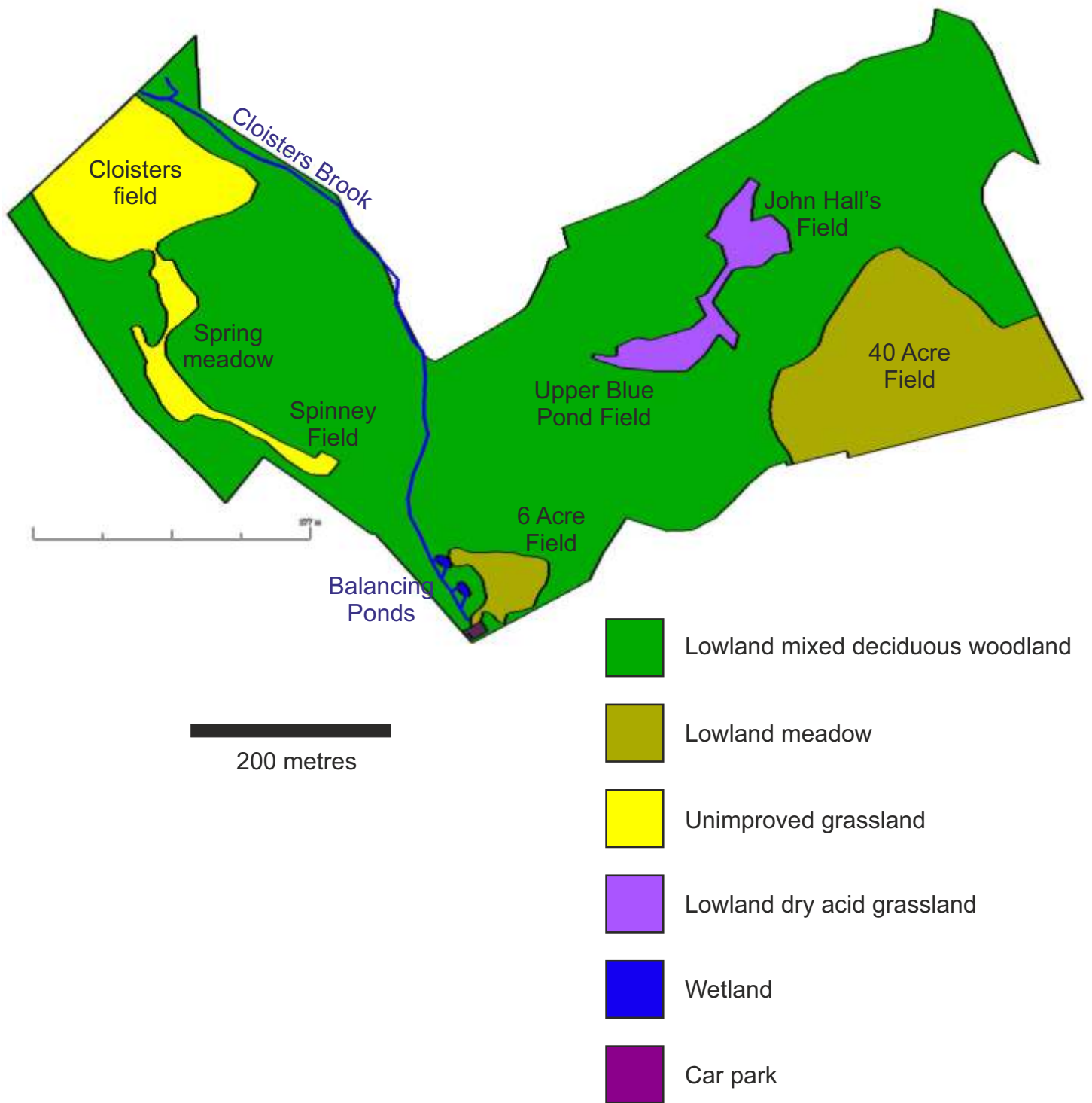


500 metres

Green, vertical hatching: Ancient and semi-natural woodland.

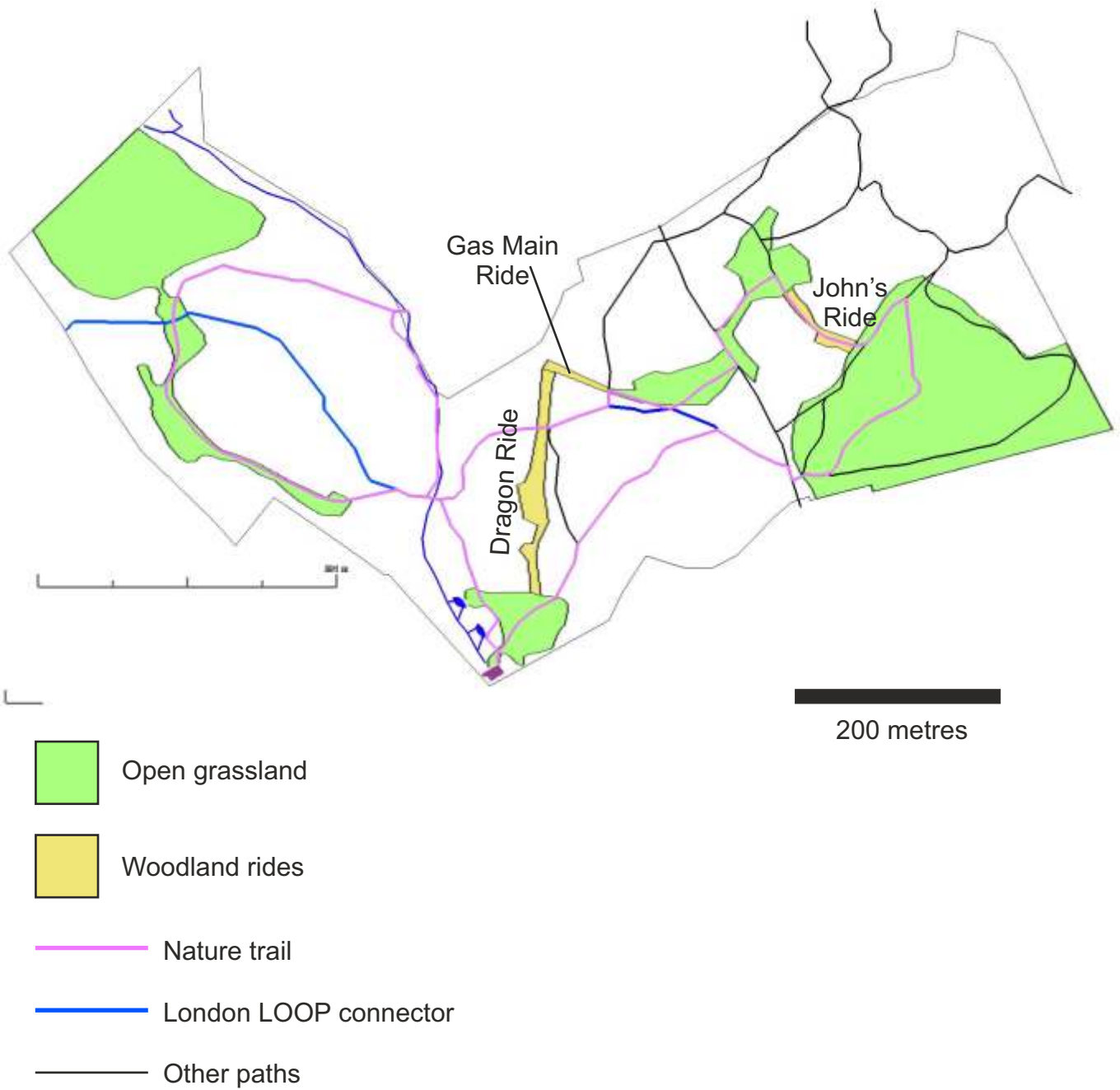
Screen shot of Natural England Magic map.

Map 5: Stanmore Country Park: Habitat types



KML overlay on Google Earth base by Steve Bolsover

Map 6: Stanmore Country Park: Paths and woodland rides



KML overlay on Google Earth base by Steve Bolsover

Map 7: Stanmore Country Park: Relict field boundaries and veteran oaks



200 metres

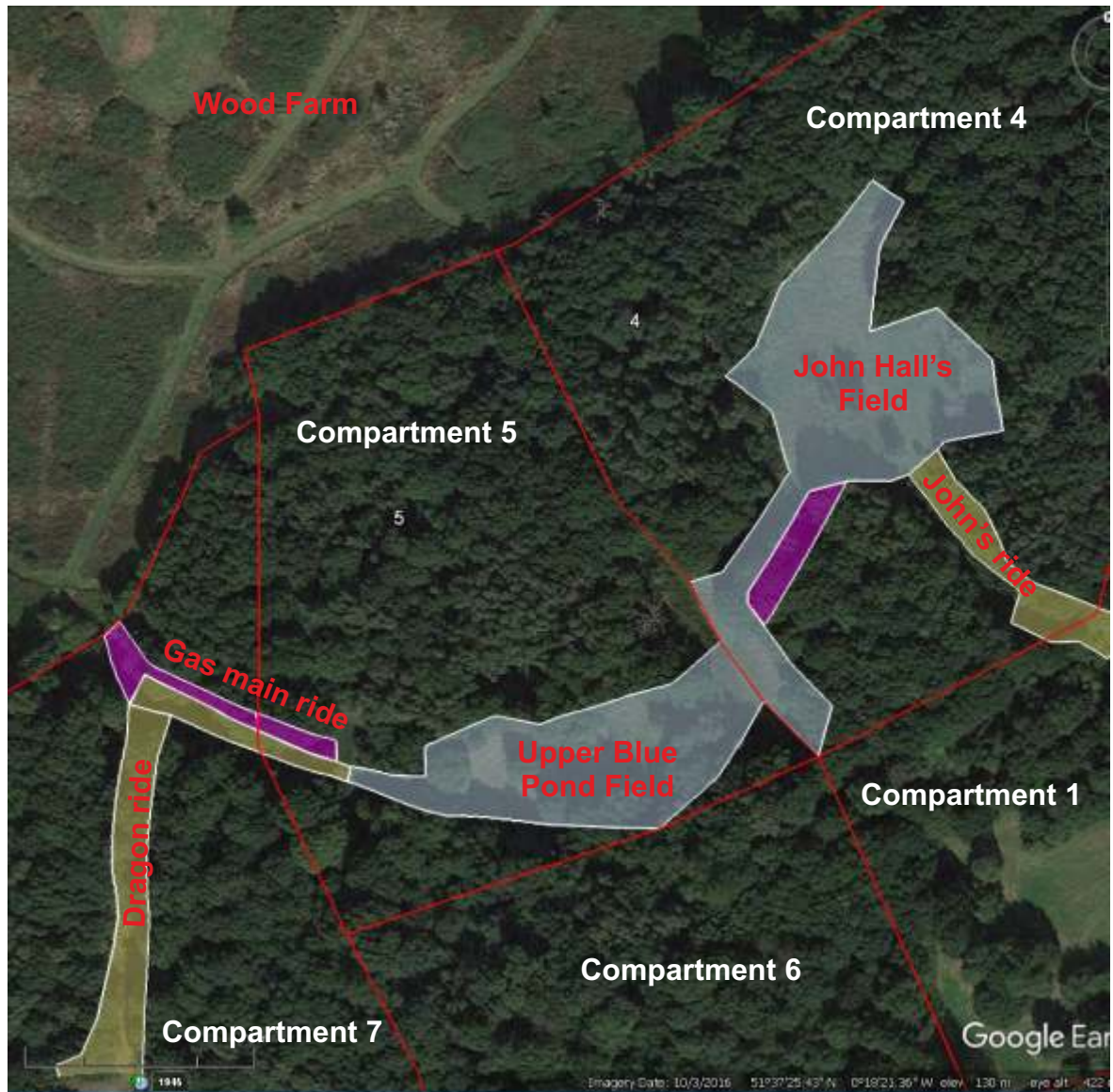
Main image: aerial photo taken December 1945. Field boundaries are clear. These boundaries are still clear on the ground as raised embankments, usually with a parallel ditch.

Red dots: veteran oaks surveyed in 2016 and 2017. The oaks are located along the lines of the historic field boundaries, indicating that they grew up in those boundaries while the main part of the site was open fields.




Main image from Google Earth. KML overlay by Steve Bolsover.

Map 8 Stanmore Country Park

Proposed clearance to widen links between open grassland areas



100 metres

-  Existing open areas of lowland dry acid grassland
-  Existing woodland rides
-  Proposed clearance

Main image from Google Earth. KML overlay by Steve Bolsover.